

**PRELP Antibody (Center)**  
**Affinity Purified Rabbit Polyclonal Antibody (Pab)**  
**Catalog # AP6665C**

**Specification**

---

**PRELP Antibody (Center) - Product Information**

Application	WB, IHC-P,E
Primary Accession	<a href="#">P51888</a>
Reactivity	Human
Host	Rabbit
Clonality	Polyclonal
Isotype	Rabbit IgG
Antigen Region	119-148

**PRELP Antibody (Center) - Additional Information**

**Gene ID** 5549

**Other Names**

Prolargin, Proline-arginine-rich end leucine-rich repeat protein, PRELP, SLRR2A

**Target/Specificity**

This PRELP antibody is generated from rabbits immunized with a KLH conjugated synthetic peptide between 119-148 amino acids from the Central region of human PRELP.

**Dilution**

WB~~1:1000

IHC-P~~1:50~100

E~~Use at an assay dependent concentration.

**Format**

Purified polyclonal antibody supplied in PBS with 0.09% (W/V) sodium azide. This antibody is purified through a protein A column, followed by peptide affinity purification.

**Storage**

Maintain refrigerated at 2-8°C for up to 2 weeks. For long term storage store at -20°C in small aliquots to prevent freeze-thaw cycles.

**Precautions**

PRELP Antibody (Center) is for research use only and not for use in diagnostic or therapeutic procedures.

**PRELP Antibody (Center) - Protein Information**

**Name** PRELP

**Synonyms** SLRR2A

**Function** May anchor basement membranes to the underlying connective tissue.

**Cellular Location**

Secreted, extracellular space, extracellular matrix

**Tissue Location**

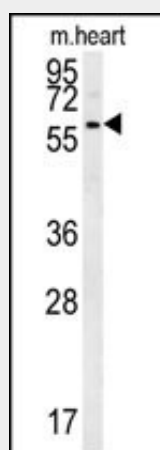
Connective tissue.

**PRELP Antibody (Center) - Protocols**

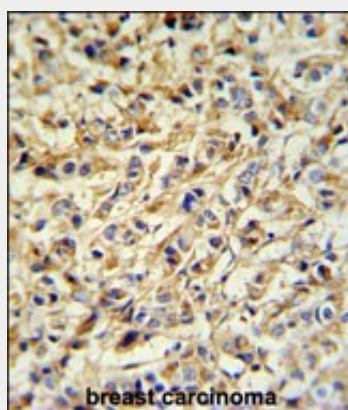
Provided below are standard protocols that you may find useful for product applications.

- [Western Blot](#)
- [Blocking Peptides](#)
- [Dot Blot](#)
- [Immunohistochemistry](#)
- [Immunofluorescence](#)
- [Immunoprecipitation](#)
- [Flow Cytometry](#)
- [Cell Culture](#)

**PRELP Antibody (Center) - Images**



PRELP Antibody (Center) (Cat. #AP6665c) western blot analysis in mouse heart tissue lysates (15ug/lane). This demonstrates the PRELP antibody detected PRELP protein (arrow).



PRELP Antibody (Center) (Cat. #AP6665c) IHC analysis in formalin fixed and paraffin embedded breast carcinoma followed by peroxidase conjugation of the secondary antibody and DAB staining. This data demonstrates the use of the PRELP Antibody (Center) for immunohistochemistry. Clinical relevance has not been evaluated.

#### **PRELP Antibody (Center) - Background**

PRELP is a leucine-rich repeat protein present in connective tissue extracellular matrix. This protein functions as a molecule anchoring basement membranes to the underlying connective tissue. This protein has been shown to bind type I collagen to basement membranes and type II collagen to cartilage. It also binds the basement membrane heparan sulfate proteoglycan perlecan. This protein is suggested to be involved in the pathogenesis of Hutchinson-Gilford progeria (HGP), which is reported to lack the binding of collagen in basement membranes and cartilage.

#### **PRELP Antibody (Center) - References**

Ehret, G.B., et al. Eur. J. Hum. Genet. 17(12):1650-1657(2009)  
Grover, J., et al. Matrix Biol. 26(2):140-143(2007)  
Johnson, J.M., et al. Mol. Vis. 12, 1057-1066 (2006)